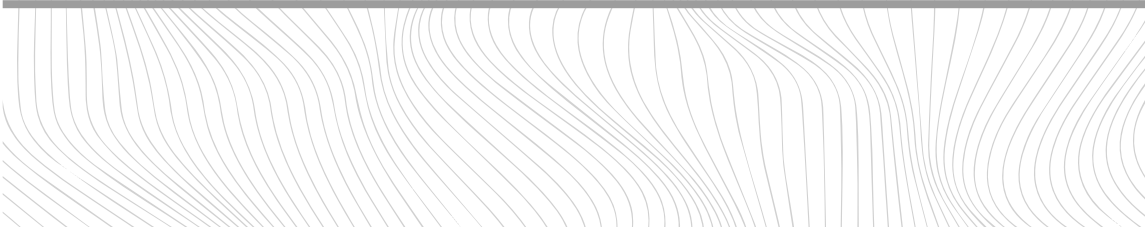
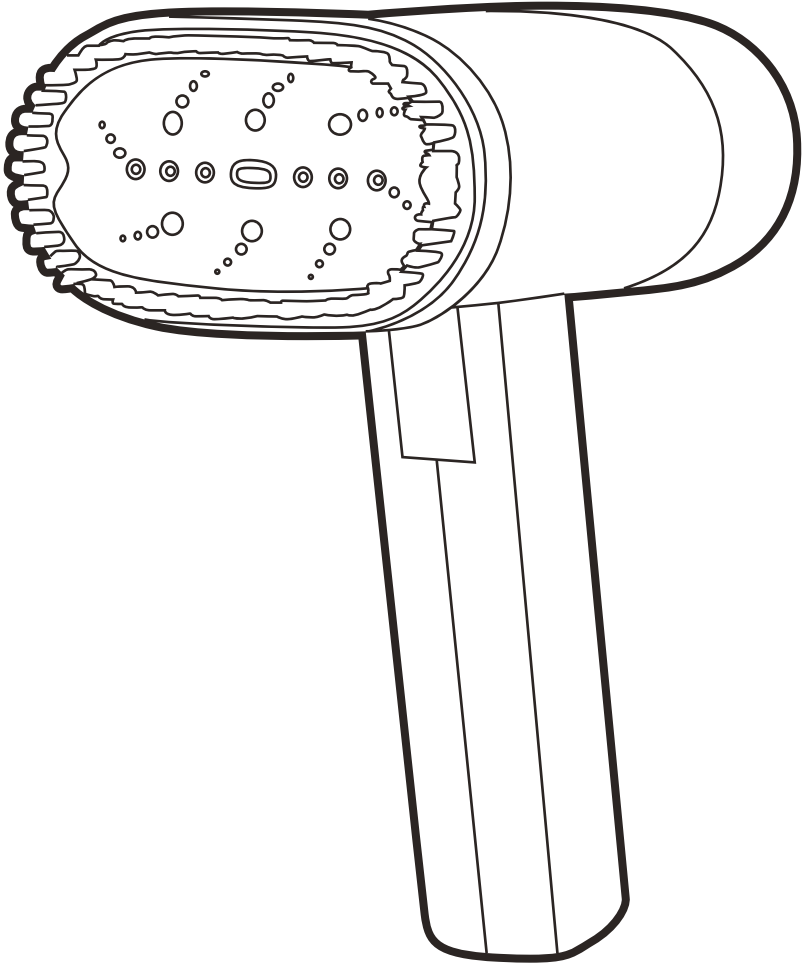
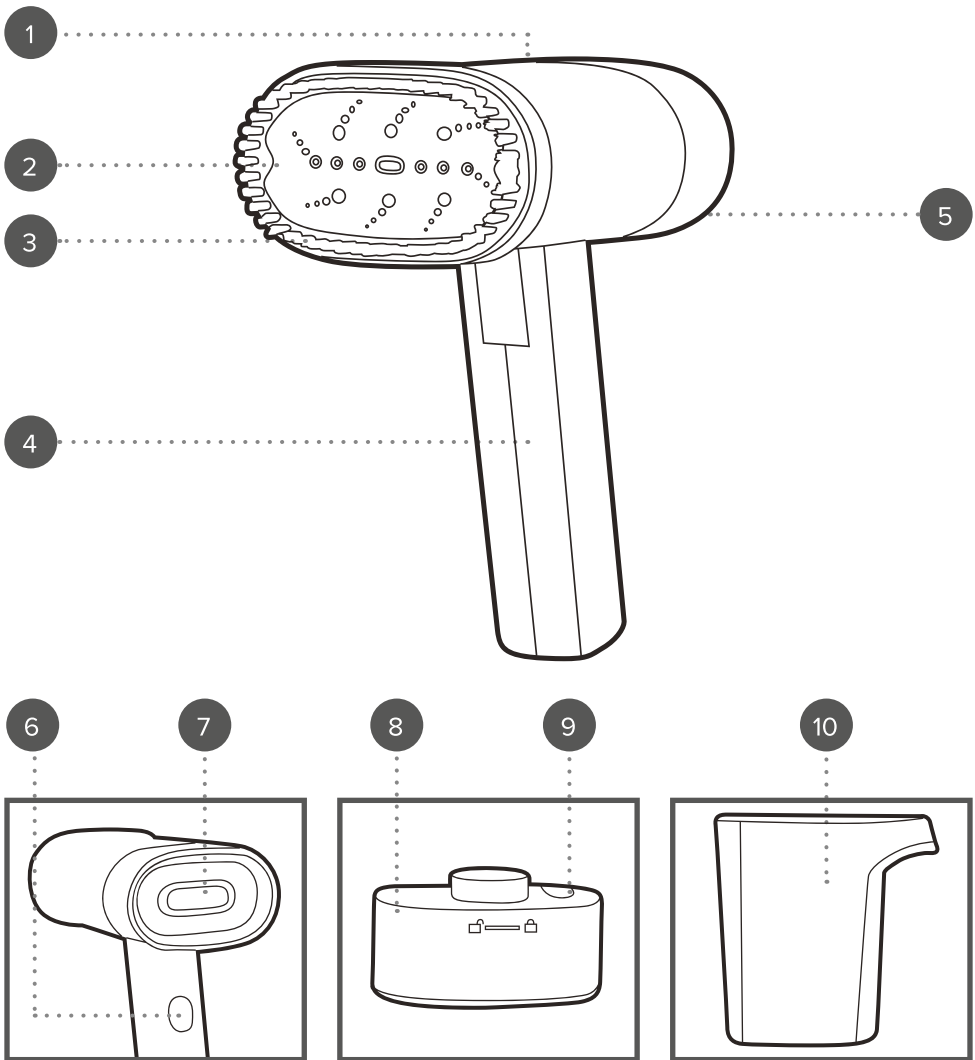


User manual

Foldable garment steamer



Description of parts



1. Power indicator light
2. Steam head
3. Lint brush attachment
4. Handle
5. Garment steamer main unit

6. Steam button
7. Max. fill mark
8. Removable water tank
9. Water tank cap
10. Measuring cup

Please retain instructions for future reference.

SAFETY INSTRUCTIONS

- When using electrical appliances, basic safety precautions should always be followed.
- Check that the voltage indicated on the rating plate corresponds with that of the local network before connecting the appliance to the mains power supply.
- Children aged from 8 years and people with reduced physical, sensory or mental capabilities or lack of experience and knowledge can use this appliance, only if they have been given supervision or instruction concerning use of the appliance in a safe way and understand the hazards involved.
- Children should be supervised to ensure that they do not play with the appliance.
- Unless they are older than 8 and supervised, children should not perform cleaning or user maintenance.
- If the power supply cord, plug or any part of the appliance is malfunctioning or if it has been dropped or damaged, cease using the product immediately to avoid potential injury.
- This appliance contains no user serviceable parts, only a qualified electrician should carry out repairs. Improper repairs may place the user at risk of harm.
- Keep the appliance out of the reach of children when it is switched on or cooling down.
- Do not leave the appliance unattended whilst connected to the mains power supply.
- Do not remove the appliance from the mains power supply by pulling the cord; switch it off and remove the plug by hand.
- Do not pull or carry the appliance by its power supply cord.
- Do not use the appliance for anything other than its intended use.
- Do not use any parts/accessories other than those supplied with this appliance.
- Do not direct steam at people or animals or towards equipment containing electrical components, such as the interior of ovens.
- Never add aromatic, alcoholic or detergent products into the appliance, as this may damage the appliance or make it unsafe for use.
- Switch off the appliance and disconnect it from the mains power supply before changing or fitting accessories.
- Always unplug the appliance after use and allow to cool fully before any cleaning or maintenance.
- Use of an extension cord with the appliance is not recommended.
- This appliance should not be operated by means of an external timer or separate remote control system.
- This appliance is intended for domestic use only. It should not be used for commercial purposes.
- The appliance emits very hot steam; always exercise extreme caution during use.



CAUTION: Hot surface – do not touch the hot section or heating components of the appliance.



WARNING: Danger of scalding. Keep the appliance away from flammable materials.

Dos and don'ts

DO:

Always hold the garment steamer by the handle.

Always follow the garment manufacturer's care instructions.

Allow the garment steamer to cool before removing or attaching the lint brush attachment.

Always attach the lint brush attachment the right way up, making sure that the steam holes are not blocked.

DON'T:

Hold the garment steamer by the body or steam head.

Fill the water tank above the max. fill mark.

Refill the water tank whilst the garment steamer is switched on and plugged into the mains power supply.

Position the garment steamer too closely to the surface of the fabric or apply too much pressure, as this could cause damage to the fabric.

Care and maintenance

Before attempting any cleaning or maintenance, always unplug the garment steamer from the mains power supply and allow it to cool sufficiently (approx. 30 minutes).

Drain any remaining water from the water tank once the garment steamer has cooled. Wipe the garment steamer with a soft, damp cloth and allow to dry thoroughly.

Clean the accessories in warm, soapy water; rinse and dry thoroughly.



NOTE: There is no cause for concern if condensation or water droplets are present inside the water tank before use. This is a result of quality testing completed on the production line and is a normal manufacturing and quality control process.

Descaling the water tank and removing limescale

If living in a hard water area, calcium deposits may begin to build up inside the water tank or accessories. If this occurs, it is recommended to use demineralised water with the steam mop.

Limescale can develop over time and can affect the performance of the garment steamer. It is recommended to remove limescale at least once a month. Use a limescale removing solution that is suitable for use with a steam mop. Always follow the manufacturer's instructions.

Instructions for use

Before first use

Clean the exterior surface of the garment steamer with a soft, damp cloth and dry thoroughly.

Do not immerse the garment steamer in water or any other liquid.

Allow the garment steamer to steam for approx. 2–3 minutes to remove any impurities that may have been left behind during production.

It is recommended to steam an old piece of cotton prior to steaming the preferred garment, to check that any impurities have been removed.



NOTE: When using the garment steamer for the first time, a slight odour may be emitted. This is normal and will soon subside. Allow for sufficient ventilation around the garment steamer when it is in use.

Filling the water tank

STEP 1: Check that the garment steamer is switched off and unplugged from the mains power supply.

STEP 2: To remove the water tank, twist it in an anticlockwise direction and pull it firmly away from the garment steamer main body.

STEP 3: Lift up the water tank cap. Using the measuring cup, fill the water tank up to the max. fill mark before closing the water tank cap.

STEP 4: Once full, refit the water tank by aligning the tabs on the water tank with the main unit and twisting the tank anti-clockwise.

Using the garment steamer

STEP 1: If required, secure the lint brush attachment by clicking it into place on the steam head; make sure that the lint brush attachment is the right way up, and that the steam holes are not blocked.

STEP 2: Place the garment steamer onto a flat, stable surface, and switch it on at the mains power supply. The garment steamer will start to heat up once it is plugged in; the power indicator light will illuminate blue to signal that the garment steamer is preheating.

STEP 3: Whilst the garment steamer is preheating, hang the garment to be steamed.

STEP 4: After approx. 30 seconds of preheating, the power indicator light will turn off to signal that the garment steamer has reached the required temperature. Push the power button to initiate the steam process.

STEP 5: To begin steaming, press the steam head (with the lint brush attachment securely in place if required) gently against the fabric. Carefully steam the garment using long, straight, downwards movements to remove any wrinkles or creases.

STEP 6: Once the garment has been steamed, push the steam button to halt the steam and then switch off and unplug the garment steamer from the mains power supply.

STEP 7: To fold away the garment steamer handle, hold the main unit body and gently push the handle towards the main unit until they touch.



NOTE: Refill the water tank as and when required; one max. fill offers approx. 4–6 minutes of continuous use. When removing the water tank, take care not to touch the steam head.



CAUTION: Always allow the garment steamer to cool fully before adding or removing the attachment from the steam head.

Storage

This garment steamer folds away for convenient storage. Before storing in a cool, dry place, check that the garment steamer and any accessories are cool, clean and dry. Make sure that the water tank is empty before storing away. Never wrap the cord tightly around the garment steamer; wrap it loosely to avoid causing damage.

Troubleshooting

Problem	Possible cause	Solution
The garment steamer is not heating up. The power indicator light is not illuminating.	The garment steamer is not plugged into the mains power supply.	Plug in and switch on the garment steamer at the mains power supply.
No steam is being emitted from the garment steamer.	There is insufficient water remaining in the water tank.	Fill the water to at least the min. fill mark and not beyond the max. fill mark.
	The water has not reached the required temperature.	Plug in the garment steamer at the mains power supply and allow it to preheat sufficiently. This should take approx. 45 seconds.
	The steam button has not been pressed.	Press the steam button to activate steam.
The garment steamer is making an abnormal sound.	The water tank is not securely locked.	Make sure that the water tank is securely pushed into place.
	The water tank is empty.	Refill the water tank to the max. fill level.

Specifications

Product code: PF01608

Input: 220–240 V ~ 50–60 Hz

Output: 1200 W

Water tank capacity: 100 ml

UK
CA CE

Disposal of Waste Batteries and Electrical and Electronic Equipment



This symbol on the product, its batteries or its packaging means that this product and any batteries it contains must not be disposed of with household waste. Instead, it is the user's responsibility to hand this over to an applicable collection point for the recycling of batteries and electrical and electronic equipment. This separate collection and recycling will help to conserve natural resources and prevent potential negative consequences for human health and the environment due to the possible presence of hazardous substances in batteries and electrical and electronic equipment, which could be caused by inappropriate disposal. Some retailers provide take-back services which allow the user to return exhausted equipment for appropriate disposal. **It is the user's responsibility to delete any data on electrical and electronic equipment prior to disposal.** For more information about where to drop batteries, electrical and electronic waste off, please contact the local city/municipality office, household waste disposal service, or the retailer.

Manufactured by:
Ultimate Products UK Ltd.,
Victoria Street, Manchester OL9 0DD. **UK.**
Ultimate Products Europe Ltd.,
19 Baggot Street Lower, Dublin D02 X658. **ROI.**

MADE IN CHINA.

CD080223/MD011123/V2