



**SEIT 1968**

# **DRAUGHT BEER DISPENSER**

**INSTRUCTION  
MANUAL**



SEIT 1968

Please retain instructions for future reference.

**NOTE: UTILISING THIS APPLIANCE FOR ALCOHOL CONSUMPTION IS STRICTLY FOR THOSE OF THE LEGAL DRINKING AGE. IT IS RECOMMENDED ADULTS DO NOT CONSUME MORE THAN 14 UNITS PER WEEK. IT IS NOT RECOMMENDED TO CONSUME ALCOHOL WHILST PREGNANT.**

## Safety Instructions

When using electrical appliances, basic safety precautions should always be followed.

Check that the voltage indicated on the rating plate corresponds with that of the local network before connecting the appliance to the mains power supply.

Children aged from 8 years and people with reduced physical, sensory or mental capabilities or lack of experience and knowledge can use this appliance, only if they have been given supervision or instruction concerning use of the appliance in a safe way and understand the hazards involved.

Children should be supervised to ensure that they do not play with the appliance.

Unless they are older than 8 and supervised, children should not perform cleaning or user maintenance.

This appliance is not a toy.

This appliance contains no user serviceable parts. If the power supply cord, plug or any part of the appliance is malfunctioning or if it has been dropped or damaged, only a qualified electrician should carry out repairs. Improper repairs may place the user at risk of harm.

Keep the appliance and its power supply cord out of the reach of children.

Keep the appliance out of the reach of children when it is switched on.

Keep the appliance and its power supply cord away from heat or sharp edges that could cause damage.

Keep the power supply cord away from any parts of the appliance that may become hot during use.

Keep the appliance away from other heat emitting appliances.

Do not immerse the appliance in water or any other liquid.

Do not operate the appliance with wet hands.

Do not leave the appliance unattended whilst connected to the mains power supply.

Do not remove the appliance from the mains power supply by pulling the cord; switch it off and remove the plug by hand.

Do not pull or carry the appliance by its power supply cord.

Do not use the appliance for anything other than its intended use.

Do not use any accessories other than those supplied.

Do not use this appliance outdoors.

Do not store the appliance in direct sunlight or in high humidity conditions.

Do not cover the appliance while it is being operated.

Do not move the appliance whilst it is in use.

Do not remove the beer keg from the appliance until it is completely empty.

Do not remove the CO<sub>2</sub> cartridge until all of the CO<sub>2</sub> gas has been used.

Do not use the CO<sub>2</sub> cartridge if the room temperature exceeds 49 °C / 120 °F.

Do not store explosive substances such as aerosol cans with flammable propellant in this appliance.

Switch off the appliance and disconnect it from the mains power supply before changing or fitting accessories and kegs.



SEIT 1968

Always unplug the appliance after use and before any cleaning or user maintenance.

Always use the appliance on a stable surface, at a height that is comfortable for the user.

Always allow at least 10 cm clear on each side of the appliance to ensure proper ventilation.

Use of an extension cord with the appliance is not recommended. This appliance should not be operated by means of an external timer or separate remote control system, other than that supplied with this appliance.

This appliance is intended for domestic use only. It should not be used for commercial purposes.

## Care and Maintenance

Before attempting any cleaning or maintenance, unplug the beer dispenser from the mains power supply.

Wipe the dispenser housing with a soft, damp cloth and dry thoroughly.

Do not immerse the beer dispenser in water or any other liquid.

Never use harsh or abrasive cleaning detergents or scourers to clean the beer dispenser or its accessories, as this could damage the surface.

**NOTE:** The beer dispenser should be cleaned after each use.

## Cleaning the Beer Tap Mechanism

Before using the beer dispenser for the first time, clean the beer tap. The beer tap should be cleaned after every use.

**STEP 1:** Press the top cover release button and open the lid of the beer dispenser. To remove the beer dispensing unit, press the chrome release buttons and disconnect the air inlet and beer outlet, then lift the beer dispensing unit out from the main unit.

**STEP 2:** Position the drip tray beneath the main unit and secure into place.

**STEP 3:** Fill a large container with warm water and submerge the cleaning bottle; squeeze then release to fill with water.

**STEP 4:** Place the keg adaptor tube over the end of the cleaning bottle and attach the other end to the beer outlet.

**STEP 5:** Pull the beer tap handle down completely and squeeze the cleaning bottle to push the water through the beer tap. Repeat 3 times or until clean.

**STEP 6:** The air inlet, beer outlet and keg piercing tube can be cleaned by placing the cleaning tube onto the end of the air inlet and squeezing the cleaning bottle.

## Selecting a Keg

Only 5 litre universal kegs and 5 litre pre-carbonated kegs can be used in this appliance.

Always follow the keg manufacturer's safety instructions.

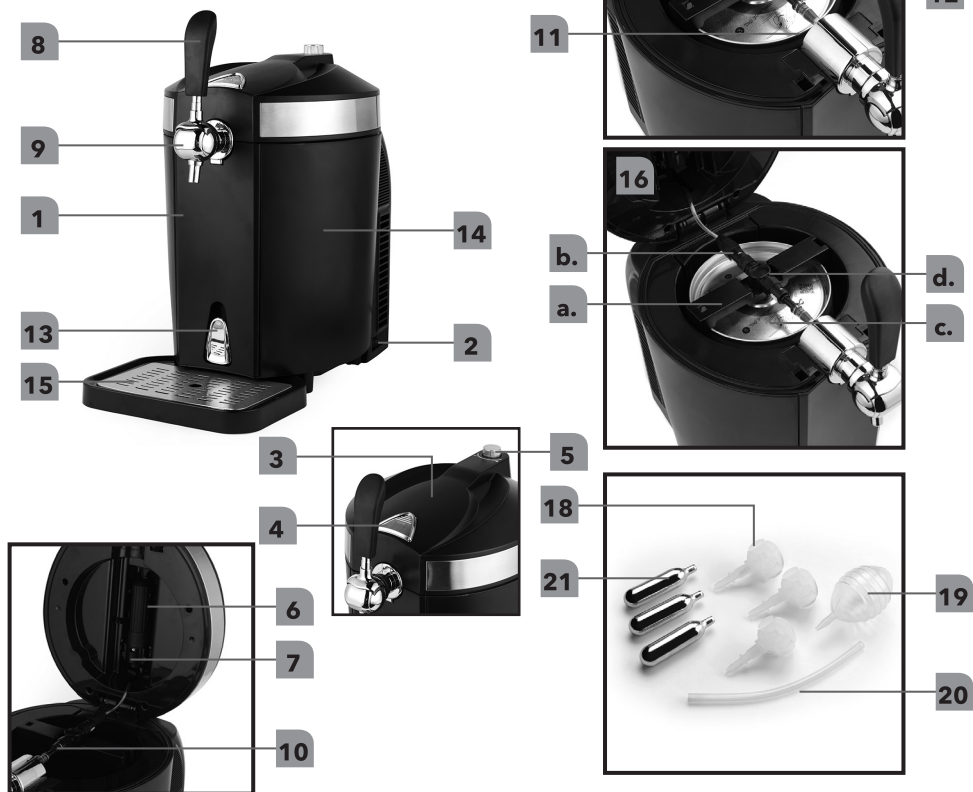
Check that the keg is undamaged and in date before use.

Chill the keg for a minimum of 10 hours in the fridge before use.

Never shake the keg before use.

Never put the keg in direct sunlight.

## Description of Parts



1. Draught Beer Dispenser main unit
2. Power switch
3. Top cover
4. Top cover release button
5. CO<sub>2</sub> pressure relief valve
6. CO<sub>2</sub> cartridge sheath
7. CO<sub>2</sub> connector
8. Beer tap handle
9. Beer tap
10. Beer tap tube
11. Tap cover release button
12. Throat clip
13. Drain switch

14. Water tank (inside main unit)
15. Drip tray
16. Beer dispensing unit
  - a. Keg mount
  - b. Air inlet
  - c. Beer outlet
  - d. Keg piercing tube
17. Piercing tube sealing ring
18. Keg adaptor
19. Cleaning bottle
20. Cleaning tube
21. CO<sub>2</sub> cartridges

## Using the Draught Beer Dispenser

### Fitting a Universal 5 Litre Keg

Before fitting or piercing the keg, follow the safety instructions on the keg to expel any excess gas. Check that the keg has rested for long enough to avoid excess foam.

**STEP 1:** Plug in and switch on the beer dispenser at the mains power supply; the built-in cooling system will activate.

**STEP 2:** Remove any cover (if present) from the seal on the keg.

**STEP 3:** Press the top cover release button and open the lid of the beer dispenser. To remove the beer dispensing unit, press the chrome release buttons and disconnect the air inlet and beer outlet, then lift the beer dispensing unit out from the main unit.

**STEP 4:** Press the keg piercing tube through the seal on the keg and fit the keg within the keg mount.

**STEP 5:** Place the mounted keg into the beer dispenser main unit and correctly position the air inlet and beer outlet.

**STEP 6:** Attach the beer tap tube to the beer outlet and the CO<sub>2</sub> connector to the air inlet.

**WARNING:** Turn the CO<sub>2</sub> pressure relief valve in a clockwise direction to '–' position so that CO<sub>2</sub> gas cannot escape.

**STEP 7:** Pull down the CO<sub>2</sub> cartridge sheath and turn in an anticlockwise direction to remove it.

**STEP 8:** Insert a CO<sub>2</sub> cartridge into the sheath with the cartridge nozzle facing upwards.

**STEP 9:** Replace the CO<sub>2</sub> cartridge sheath and turn in a clockwise direction until it clicks, indicating that the cartridge has been pierced and CO<sub>2</sub> gas can flow freely inside the beer dispenser.

**STEP 10:** Reposition the CO<sub>2</sub> cartridge sheath inside the top cover, then close it.

**NOTE:** To help with the cooling process, push the drain switch up completely, then fill the water tank with water up to the max. fill mark.

At an ambient temperature of 22–24 °C the built-in cooling system will work for approx. 19–21 hours and will chill the keg to between 3 and 6 °C.

**WARNING:** Always turn the CO<sub>2</sub> pressure relief valve in a clockwise direction to '–' position when cooling beer, when beer flow is paused, or when changing the CO<sub>2</sub> cartridge.

**STEP 11:** To release beer from the keg, turn the CO<sub>2</sub> pressure release valve in an anticlockwise direction towards the '+' position.

**STEP 12:** To pour the beer, pull the beer tap handle down completely.

**NOTE:** The CO<sub>2</sub> pressure release valve can be adjusted to increase or decrease the amount of CO<sub>2</sub> used when pouring.

**WARNING:** When the keg is almost empty, the final amount of beer will be released as a jet.

### Replacing a Universal 5 Litre Keg

**STEP 1:** Press the top cover release button and open the lid of the beer dispenser. To remove the beer dispensing unit, press the chrome release buttons and disconnect the air inlet and beer outlet, then lift the beer dispensing unit out from the main unit.

**STEP 2:** To remove the keg from the beer dispensing unit, release the right-hand side of the keg mount and push the keg to the left. Pull the keg piercing tube out from the keg.

**STEP 3:** To fit a new keg, follow steps 1 to 11 in the section entitled 'Fitting a Universal 5 Litre Keg'.

### Replacing the CO<sub>2</sub> Cartridge

**STEP 1:** When the CO<sub>2</sub> cartridge runs out of gas, turn the CO<sub>2</sub> pressure release valve in a clockwise direction to position '-' so that CO<sub>2</sub> gas cannot escape.

**STEP 2:** Press the top cover release button and open the lid of the beer dispenser.

**STEP 3:** Pull down the CO<sub>2</sub> cartridge sheath and turn in an anticlockwise direction to remove it. Remove the empty CO<sub>2</sub> cartridge and dispose of it carefully.

**STEP 4:** Insert a CO<sub>2</sub> cartridge into the sheath with the cartridge nozzle facing upwards.

**STEP 5:** Replace the CO<sub>2</sub> cartridge sheath and turn in a clockwise direction until it clicks, indicating that the cartridge has been pierced and CO<sub>2</sub> gas can flow freely inside the beer dispenser.

**STEP 6:** Reposition the CO<sub>2</sub> cartridge sheath inside the top cover, then close it.

**NOTE:** The beer dispenser is compatible with 16 g threaded CO<sub>2</sub> cartridges only. Do not use any other type of cartridge.

### Fitting a Pre-carbonated 5 Litre Keg

Pre-carbonated kegs do not require use of a CO<sub>2</sub> cartridge.

Pre-carbonated kegs come with a pre-attached tap which must be removed before use.

Before fitting the keg or piercing the keg plug, follow the safety instructions on the keg.

Check that the keg has rested for long enough to avoid excess foam.



**STEP 1:** Plug in and switch on the beer dispenser at the mains power supply; the built-in cooling system will activate.

**STEP 2:** Remove the pre-attached tap from the top of the keg.

**STEP 3:** Press the top cover release button and open the lid of the beer dispenser. To remove the beer dispensing unit, press the chrome release buttons and disconnect the air inlet and beer outlet, then lift the beer dispensing unit out from the main unit.

**WARNING:** Check that the CO<sub>2</sub> pressure release valve is open at '+' position and that the CO<sub>2</sub> cartridge sheath is empty.

**STEP 4:** Position the keg adaptor onto the top of the keg and carefully push into place; fit the keg within the keg mount.

**STEP 5:** Place the mounted keg into the beer dispenser main unit and correctly position the air inlet and beer outlet.

**STEP 6:** Attach one end of the keg adaptor tube to the nozzle on the keg adaptor and the other end to the beer outlet. Then close the top cover.

**NOTE:** To help with the cooling process, push the drain switch up completely, then fill the water tank with water up to the max. fill mark.

At an ambient temperature of 22-24 °C the built-in cooling system will work for approx. 19-21 hours and will chill the keg to between 3 and 6 °C.

**STEP 7:** To pour the beer, pull the beer tap handle down completely.

**NOTE:** Squeeze the keg adaptor on both sides and lift away to release from the keg.

## Releasing Water from the Draught Beer Dispenser

It is advised to change the water once a week.

**STEP 1:** With the drip tray in position, push the drain switch down completely to release the water into the drip tray.

**STEP 2:** When all the water has been released or the drip tray is full, push the drain switch up completely, remove the drip tray from the main unit and dispose of the water. Repeat these steps, if necessary, until fully drained.



SEIT 1968

## Replacing the Joint Sealing Ring

Improper use or wear and tear can affect the performance of the joint sealing ring in the CO<sub>2</sub> connector. To replace it:

**STEP 1:** Using a small flat head screwdriver (not included), carefully lift out the joint sealing ring from the CO<sub>2</sub> connector, taking care not to cause damage.

**STEP 2:** Insert the replacement joint sealing ring into the CO<sub>2</sub> connector and press it down carefully using an empty CO<sub>2</sub> cartridge.

**WARNING:** Do not use a full CO<sub>2</sub> cartridge to fit the replacement joint sealing ring.

Switch off and unplug the beer dispenser from the mains power supply before replacing the joint sealing ring. Do not replace the joint sealing ring while there is a keg inside the beer dispenser.

## Replacing the Beer Tap Tube

If the beer tap tube breaks or leaks, it must be replaced.

**STEP 1:** Press the tap cover release button (located at the rear of the beer tap mechanism) and pull up the detachable tap cover.

**STEP 2:** Pull the beer tap handle down completely and carefully pull out the beer tap tube.

**STEP 3:** Release the throat clip and detach the beer outlet connector.

**STEP 4:** Fit the replacement beer tap tube onto the beer outlet and secure the throat clip. Pull the beer tap handle down completely and refit the beer tap tube in place.

**STEP 5:** Close the detachable tap cover by pushing down until it clicks.

**WARNING:** Switch off and unplug the beer dispenser from the mains power supply before replacing the beer tap tube.

Do not replace the beer tap tube while there is a keg inside the beer dispenser.

## Replacing the Piercing Tube Sealing Ring

**NOTE:** Make sure that the keg piercing tube is secure before replacement, so that the piercing tube sealing ring is not damaged.  
If the beer dispensing unit is leaking, the piercing tube sealing ring needs to be replaced.

- STEP 1:** Press the top cover release button and open the lid of the beer dispenser. To remove the beer dispensing unit, press the chrome release buttons and disconnect the air inlet and beer outlet, then lift the beer dispensing unit out from the main unit.
- STEP 2:** Turn the keg piercing tube in an anticlockwise direction to remove it from the beer dispensing unit.
- STEP 3:** Remove the piercing tube sealing ring from the top of the keg piercing tube and insert the replacement.
- STEP 4:** Reattached the keg piercing tube to the beer dispensing unit by turning in a clockwise direction until secure.

**WARNING:** Switch off and unplug the beer dispenser from the mains power supply before replacing the piercing tube sealing ring. Do not replace the piercing tube sealing ring while there is a keg inside the beer dispenser.

## Troubleshooting

Problem	Cause	Solution
The beer tap does not work.	The beer tap tube is not properly connected or is damaged.	Check that the beer tap tube is properly connected. Follow the steps in the sections entitled 'Fitting a Universal 5 Litre Keg', 'Fitting a Pre-carbonated 5 Litre Keg' or 'Changing the Beer Tap Tube'.

<p>Beer is not pouring out.</p>	<p>The CO<sub>2</sub> cartridge is empty.</p> <p>The keg is empty.</p>	<p>Replace the CO<sub>2</sub> cartridge following the steps in the section entitled 'Replacing the CO<sub>2</sub> Cartridge'.</p> <p>Replace the keg following the steps in the sections entitled 'Fitting a Universal 5 Litre Keg' or 'Fitting a Pre-carbonated 5 Litre Keg'.</p>
<p>The beer is too carbonated or foamy.</p>	<p>The keg is too warm.</p> <p>The keg has been shaken before use.</p> <p>There is keg is almost empty.</p>	<p>Cool the keg following the keg manufacturer's instructions.</p> <p>Put the keg to one side and allow to rest.</p> <p>Replace the keg following the steps in the sections entitled 'Fitting a Universal 5 Litre Keg' or 'Fitting a Pre-carbonated 5 Litre Keg'.</p>
<p>Beer is pouring out too slowly.</p>	<p>The CO<sub>2</sub> cartridge is almost empty.</p> <p>The beer tap tube is not properly connected or is damaged.</p>	<p>Replace the CO<sub>2</sub> cartridge following the steps in the section entitled 'Replacing the CO<sub>2</sub> Cartridge'.</p> <p>Check that the beer tap tube is properly connected. Follow the steps in the sections entitled 'Fitting a Universal 5 Litre Keg', 'Fitting a Pre-carbonated 5 Litre Keg' or 'Changing the Beer Tap Tube'.</p>

## Specifications

Product code: PT4919

Climate type: SN/N

Vesicant: Cyclopentane  $C_5H_{10}$

Output: 220-240 V ~ 50 Hz, 65 W

## Connection to the mains

Please check that the voltage indicated on the product corresponds with your supply voltage.

### Important

As the colours in the mains lead of this appliance may not correspond with the coloured markings identifying the terminals in your plug, please proceed as follows:

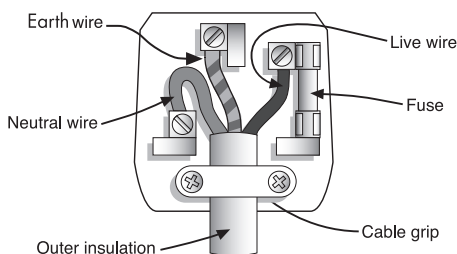
The wires in the mains lead are coloured in accordance with the following code:

Blue Neutral (N)

Brown Live (L)

Green/Yellow Earth ( $\perp$ )

FOR UK USE ONLY - Plug fitting details (where applicable).



The wire coloured BLUE is the NEUTRAL and must be connected to the terminal marked N or coloured BLACK.

The wire coloured BROWN is the LIVE wire and must be connected to the terminal marked L or coloured RED.

The wire coloured GREEN/YELLOW must be connected to the terminal marked with the letter E or marked  $\perp$ .

On no account must either the BROWN or the BLUE wire be connected to the EARTH terminal ( $\perp$ ).

Always ensure that the cord grip is fastened correctly.

The plug must be fitted with a fuse of the same rating already fitted and conforming to BS 1362 and be ASTA approved.

If in doubt consult a qualified electrician who will be pleased to do this for you.

## Non-rewireable mains plug

If your appliance is supplied with a non-rewireable plug fitted to the mains lead and should the fuse need replacing, you must use an ASTA approved one (conforming to BS 1362 of the same rating).

If in doubt, consult a qualified electrician who will be pleased to do this for you.

If you need to remove the plug - DISCONNECT IT FROM THE MAINS and then cut it off the mains lead and immediately dispose of it safely. Never attempt to reuse the plug or insert it into a socket outlet as there is a danger of an electric shock.

**UP Global Sourcing UK Ltd.,  
UK. Manchester OL9 0DD.  
Germany. 51149 Köln.**

If this product does not reach you in an acceptable condition please contact our Customer Services Department at **customer care@upgs.com**

Please have your delivery note to hand as details from it will be required.

If you wish to return this product please return it to the retailer from where it was purchased with your receipt (subject to their terms and conditions).

## **Guarantee**

All products purchased as new carry a manufacturer's guarantee; the time period of the guarantee will vary dependent upon the product. Where reasonable proof of purchase can be provided, Petra will provide a standard 12 month guarantee with the retailer from the date of purchase. This is only applicable when products have been used as instructed for their intended, domestic use. Any misuse or dismantling of products will invalidate any guarantee.

Under the guarantee, we undertake to repair or replace free of any charge any parts found to be defective. In the event that we cannot provide an exact replacement, a similar product will be offered or the cost refunded. Any damages from daily wear and tear are not covered by this guarantee, nor are consumables such as plugs, fuses etc.

Please note that the above terms and conditions may be updated from time to time and we therefore recommend that you check these each time you revisit the website.

Nothing in this guarantee or in the instructions relating to this product excludes, restricts or otherwise affects your statutory rights.

## **Disposal of Waste Batteries and Electrical and Electronic Equipment**



This symbol on the product, its batteries or its packaging means that this product and any batteries it contains must not be disposed of with household waste. Instead, it is the user's responsibility to hand this over to an applicable collection point for the recycling of batteries and electrical and electronic equipment. This separate collection and recycling will help to conserve natural resources and prevent potential negative consequences for human health and the environment due to the possible presence of hazardous substances in batteries and electrical and electronic equipment, which could be caused by inappropriate disposal. Some retailers provide take-back services which allow the user to return exhausted equipment for appropriate disposal. **It is the user's responsibility to delete any data on electrical and electronic equipment prior to disposal.** For more information about where to drop batteries, electrical and electronic waste off, please contact the local city/municipality office, household waste disposal service, or the retailer.

## **3** YEAR GUARANTEE

\*To be eligible for the extended guarantee, go to **guarantee.upgs.com/petra** and register your product within 30 days of purchase.

Manufactured by:  
UP Global Sourcing UK Ltd.,  
**UK.** Manchester OL9 0DD.  
**Germany.** 51149 Köln.

MADE IN CHINA.

**[www.upgs.com/petra](http://www.upgs.com/petra)**

©Petra Trademark. All rights reserved.

CD140222/MD000000/V1

