



SINCE 1968

GLASS JUG BLENDER

**INSTRUCTION
MANUAL**

Safety Instructions

When using electrical appliances, basic safety precautions should always be followed.

Check that the voltage indicated on the rating plate corresponds with that of the local network before connecting the appliance to the mains power supply.

Children aged from 8 years and people with reduced physical, sensory or mental capabilities or lack of experience and knowledge can use this appliance, only if they have been given supervision or instruction concerning use of the appliance in a safe way and understand the hazards involved.

Children should be supervised to ensure that they do not play with the appliance.

Unless they are older than 8 and supervised, children should not perform cleaning or user maintenance.

This appliance is not a toy.

If the power supply cord, plug or any part of the appliance is malfunctioning or if it has been dropped or damaged, cease using the product immediately to avoid potential injury.

This appliance contains no user serviceable parts, only a qualified electrician should carry out repairs. Improper repairs may place the user at risk of harm.

Keep the appliance and its power supply cord out of the reach of children.

Keep the appliance out of the reach of children when it is switched on or cooling down.

Keep the appliance and its power supply cord away from heat or sharp edges that could cause damage.

Keep the power supply cord away from any parts of the appliance that may become hot during use.

Keep the appliance away from other heat emitting appliances.

Do not immerse the appliance in water or any other liquid.

Do not operate the appliance with wet hands.

Do not leave the appliance unattended whilst connected to the mains power supply.

Do not remove the appliance from the mains power supply by pulling the cord; switch it off and remove the plug by hand.

Do not pull or carry the appliance by its power supply cord.

Do not use the appliance for anything other than its intended use.

Do not use any accessories other than those supplied.

Do not use this appliance outdoors.

Do not store the appliance in direct sunlight or in high humidity conditions.

Do not move the appliance whilst it is in use.

Switch off the appliance and disconnect it from the mains power supply before changing or fitting accessories.

Always unplug the appliance after use and before any cleaning or user maintenance.

Always ensure that the appliance has cooled fully after use before performing any cleaning or maintenance or storing away.

Always use the appliance on a stable, heat-resistant surface, at a height that is comfortable for the user.

Use of an extension cord with the appliance is not recommended.

This appliance should not be operated by means of an external timer or separate remote control system, other than that supplied with this appliance.

This appliance is intended for domestic use only. It should not be used for commercial purposes.

Thermal Cut-out Device

This product is fitted with a thermal safety cut-out device, built in to prevent it from overheating. Should the product start to overheat, the thermal safety cut-out system will automatically operate and the glass jug blender will turn off. Please remove some of the foodstuffs and allow the product to cool down for 30 minutes before turning back on.

Dos and Don'ts

DO:

Check that the blade attachment is securely fitted before use.

Chop all ingredients into small pieces before blending.

Add a small amount of cold liquid or reduce the quantity of the ingredients in the glass jug if the blades are not running smoothly.

Remove the glass jug from the blender base unit and shake to redistribute the ingredients if the ingredients do not blend evenly.

CAUTION: Exercise caution when handling the blade attachment, as the blades may get hot during use. If blending warm ingredients, take care when removing the blade attachment, as pressure build-up could cause the contents of the blender to spill.

DO NOT:

Attempt to remove the blade attachment until the blades have fully stopped moving.

Blend dry ingredients for more than 60 seconds at a time.

Dry blend ice cubes without sufficient liquid.

WARNING: Do not blend hot liquid or food.

Never exceed the max. fill mark when adding ingredients to the glass jug, as this could cause spillage and may damage the blender. The blender must not be operated when the glass jug is empty, cracked or broken.

Do not clean the glass jug with boiling water.

Care and Maintenance

STEP 1: Switch off and unplug the blender from the mains power supply before performing any cleaning or user maintenance.

STEP 2: Wipe the blender base unit with a soft, damp cloth and allow to dry thoroughly.

STEP 3: To disassemble the blade attachment for cleaning, place the glass jug on a flat surface and position the blade tool around the base of the unit, then turn in an anti-clockwise direction.

STEP 4: Wash all of the accessories, except the blade attachment, in warm, soapy water, then rinse and dry thoroughly.

Never touch the blades; using extreme caution, clean the blades with a brush and dry carefully.

Do not immerse the blender base unit in water or any other liquid.

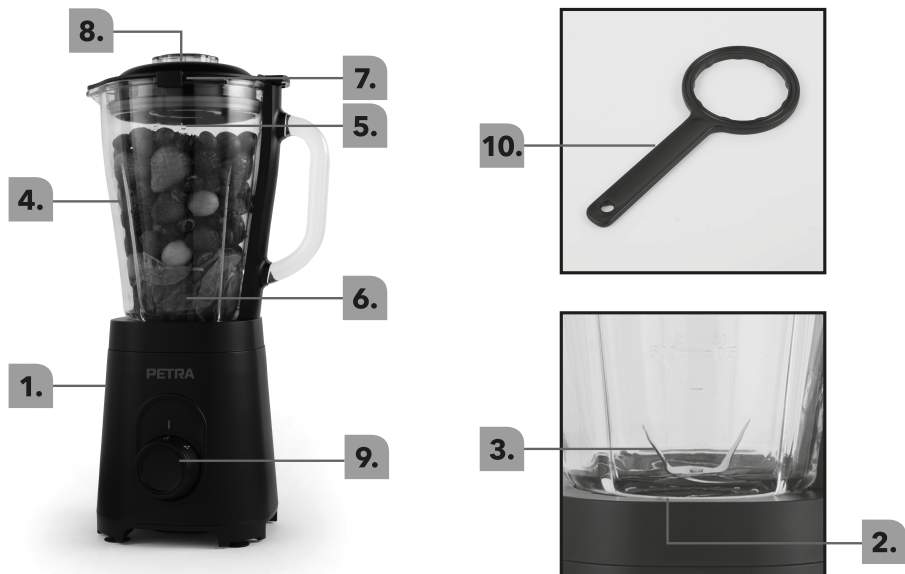
Never use harsh or abrasive detergents or scourers to clean the blender, as this could cause damage.

The blade attachment is provided fully assembled. To reassemble after cleaning, turn the blade attachment by hand in a clockwise direction until secure; do not use the blade tool to tighten the blade attachment as this could damage the unit.

NOTE: Always clean the blender immediately after each use. The blender is not suitable for use in a dishwasher.

WARNING: Handle the blade attachment with care, as the blades are extremely sharp. Exercise caution when attaching, removing, cleaning or storing the blade attachment.

Description of Parts



- | | |
|--------------------------------|-------------------------------|
| 1. Glass Jug Blender base unit | 6. Min. fill mark (0.5 L) |
| 2. Blade attachment | 7. Jug lid |
| 3. Stainless steel blade | 8. Filler cap |
| 4. Glass jug | 9. Control dial (1, 2, pulse) |
| 5. Max. fill mark (1.5 L) | 10. Blade tool |

Instructions for Use

Before First Use

STEP 1: Before connecting to the mains power supply, clean the blender following instructions outlined in the section entitled 'Care and Maintenance'.

Do not immerse the blender base unit in water or any other liquid.

Never use harsh or abrasive cleaning detergents or scourers to clean the blender or its accessories, as this could cause damage.

NOTE: When using the blender for the first time, a slight smoke or odour may be emitted. This is normal and will soon subside. Allow for sufficient ventilation around the blender.

Using the Glass Jug Blender

STEP 1: Position the blender base unit onto a flat, stable surface at a height that is comfortable for the user.

STEP 2: Place the glass jug onto the blender base unit and twist in a clockwise direction until secure.

STEP 3: Chop the ingredients to be blended into small pieces and place them into the glass jug. The filler cap can be used as a small measuring cup.

STEP 4: Pour the required amount of liquid into the glass jug. Do not exceed the max. fill mark.

STEP 5: Fit the jug lid and filler cap onto the glass jug. Plug in and switch on the blender at the mains power supply.

STEP 6: To blend the ingredients, turn the control dial to the desired speed setting (1, 2). Turn the dial to the 'P' position to activate pulse function and release to stop it. The pulse function provides quick bursts of speed, useful for blending more solid foods.

STEP 7: Stop blending by turning the control dial to position '0'.

STEP 8: Switch off and unplug the blender from the mains power supply.

STEP 9: Detach the glass jug from the blender base unit by twisting in an anticlockwise direction.

NOTE: Ingredients can be added during blending via the filler cap. Twist the filler cap in an anticlockwise direction to remove it. When mixing liquid, use a tall container or blend small quantities at a time to reduce spillage and splattering. The unit will not operate if the jug blender and lid are not correctly locked into place. Ensure all tabs are aligned and locked before use.

The unit is fitted with a thermal overheat protection. If the unit gets too hot the unit will cut out. To continue, switch the unit off at the socket, remove some of the foodstuffs and wait for 30 minutes before continuing.

WARNING: Max. operation time is 1 minute. Allow to cool for approx. 3 minutes before using the blender again.

Troubleshooting

Problem	Solution
The blender is not working.	Ensure the blender is plugged into the mains power supply. Check the fuse is in working order and does not need to be replaced. Make sure that the glass jug is fully secured onto the blender base unit. The thermal overheat protection may have activated. Turn the blender off at the mains power supply and wait for 30 minutes before reusing.
The drink contains lumps.	Reduce the amount of solid ingredients in the glass jug or add more liquid. Use the pulse function in short burst for hard ingredients and ice.
The drink is watery.	Use the pulse function in short bursts to ensure the ingredients are not over-blended.

Storage

Reassemble the blender.

Check that the blender is cool, clean and dry before storing in a cool, dry place.

Never wrap the cord tightly around the blender; wrap it loosely to avoid causing damage

Specifications

Product code: PT5531

Input: 220-240 V~ 50/60 Hz

Output: 600 W

Maximum operation time: 1 minute, cool for 3 minutes.

Notes

UK PLUGS ONLY

Connection to the mains

Please check that the voltage indicated on the product corresponds with your supply voltage.

Important

As the colours in the mains lead of this appliance may not correspond with the coloured markings identifying the terminals in your plug, please proceed as follows:

The wires in the mains lead are coloured in accordance with the following code:

Blue Neutral (N)

Brown Live (L)

FOR UK USE ONLY - Plug fitting details
(where applicable).

The wire coloured BLUE is the NEUTRAL and must be connected to the terminal marked N or coloured BLACK.

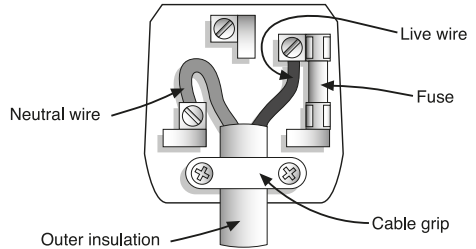
The wire coloured BROWN is the LIVE wire and must be connected to the terminal marked L or coloured RED.

On no account must either the BROWN or the BLUE wire be connected to the EARTH terminal (\perp).

Always ensure that the cord grip is fastened correctly.

The plug must be fitted with a fuse of the same rating already fitted and conforming to BS 1362 and be ASTA approved.

If in doubt consult a qualified electrician who will be pleased to do this for you.



Non-rewireable mains plug

If your appliance is supplied with a non-rewireable plug fitted to the mains lead and should the fuse need replacing, you must use an ASTA approved one (conforming to BS 1362 of the same rating).

If in doubt, consult a qualified electrician who will be pleased to do this for you.

If you need to remove the plug - DISCONNECT IT FROM THE MAINS and then cut it off the mains lead and immediately dispose of it safely. Never attempt to reuse the plug or insert it into a socket outlet as there is a danger of an electric shock.

**UP Global Sourcing UK Ltd.,
Victoria Street, Manchester OL9 0DD. UK.
Edmund-Rumpler Straße 5, 51149 Köln. Germany.**

If this product does not reach you in an acceptable condition please contact our Customer Services Department at **customercare@upgs.com**.

Please have your delivery note to hand as details from it will be required.

If you wish to return this product please return it to the retailer from where it was purchased with your receipt (subject to their terms and conditions).

Guarantee

All products purchased as new carry a manufacturer's guarantee; the time period of the guarantee will vary dependent upon the product. Where reasonable proof of purchase can be provided, Petra will provide a standard 12 month guarantee with the retailer from the date of purchase. This is only applicable when products have been used as instructed for their intended, domestic use. Any misuse or dismantling of products will invalidate any guarantee.

Under the guarantee, we undertake to repair or replace free of any charge any parts found to be defective. In the event that we cannot provide an exact replacement, a similar product will be offered or the cost refunded. Any damages from daily wear and tear are not covered by this guarantee, nor are consumables such as plugs, fuses etc.

Please note that the above terms and conditions may be updated from time to time and we therefore recommend that you check these each time you revisit the website.

Nothing in this guarantee or in the instructions relating to this product excludes, restricts or otherwise affects your statutory rights.

Disposal of Waste Batteries and Electrical and Electronic Equipment



This symbol on the product, its batteries or its packaging means that this product and any batteries it contains must not be disposed of with household waste. Instead, it is the user's responsibility to hand this over to an applicable collection point for the recycling of batteries and electrical and electronic equipment. This separate collection and recycling will help to conserve natural resources and prevent potential negative consequences for human health and the environment due to the possible presence of hazardous substances in batteries and electrical and electronic equipment, which could be caused by inappropriate disposal. Some retailers provide take-back services which allow the user to return exhausted equipment for appropriate disposal.

It is the user's responsibility to delete any data on electrical and electronic equipment prior to disposal. For more information about where to drop batteries, electrical and electronic waste off, please contact the local city/municipality office, household waste disposal service, or the retailer.



Manufactured by:
UP Global Sourcing UK Ltd.,
Victoria Street, Manchester OL9 0DD. **UK.**
Edmund-Rumpler Straße 5, 51149 Köln. **Germany.**

MADE IN CHINA.

www.petra-electric.com

©Petra Trademark. All rights reserved.



CD090522/MD030123/V3